

East Midlands Maternity and Children's Clinical Network

CCG Asthma
Infographics
2014-15 Data



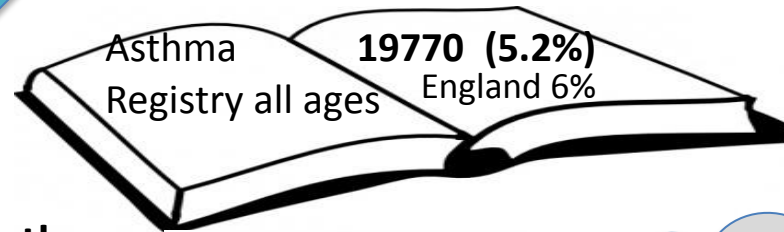
Leicester City CCG 2014-15 Data



A&E attendance 0-4 years all causes per 1,000 children
598.4*

*England 540.5

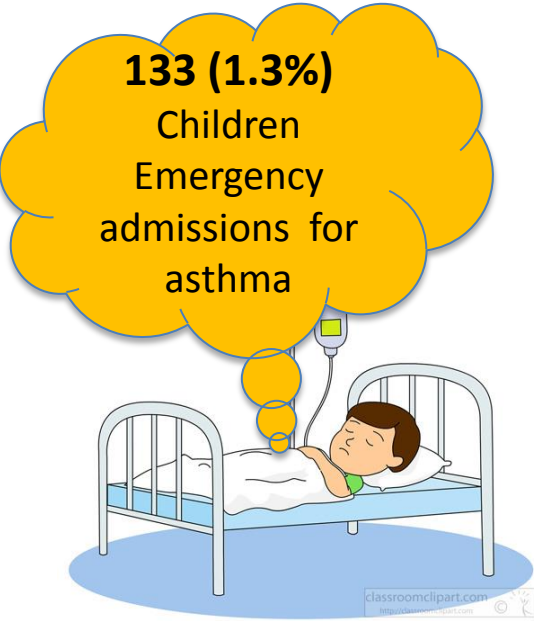
10062
Est number of children with asthma in CCG
(1:11 population)



Asthma Registry all ages **19770 (5.2%)**
England 6%

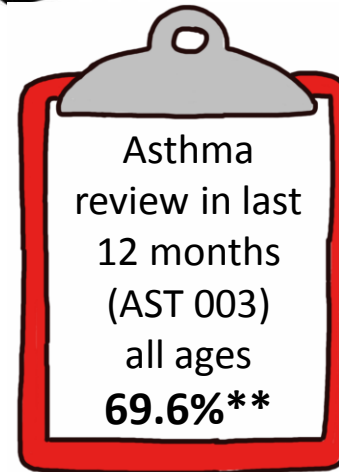


Population age distribution



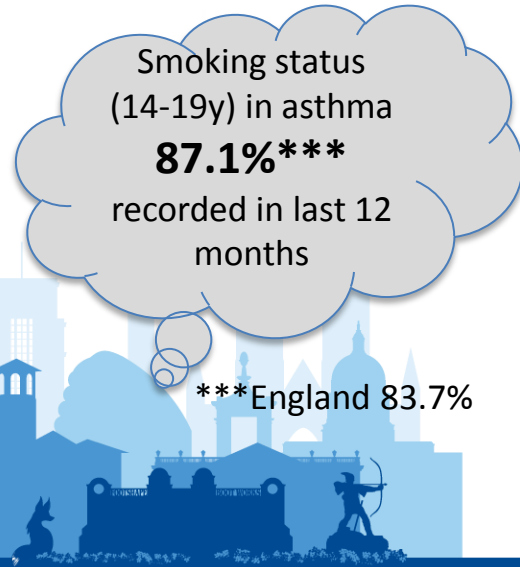
133 (1.3%)
Children Emergency admissions for asthma

Est cost of asthma admissions
£93,366



Asthma review in last 12 months (AST 003) all ages
69.6%**

**England 69.7%



Smoking status (14-19y) in asthma
87.1%***
recorded in last 12 months

***England 83.7%

Data Sources all data 2014/15

- Population age distribution 2015 <http://fingertips.phe.org.uk/profile/general-practice/data#mod,2,pyr,2015,pat,19,par,E38000133,are,-,sid1,2000005,ind1,-,sid2,-,ind2,->
- Estimated number of children <19 yrs with asthma based on 1 in 11 children from population profile data
- A&E attendances 0-4 years all causes per 100,000 <http://fingertips.phe.org.uk>
- Number of patients on asthma register AST001: (The percentage of patients with asthma, excluding those who have been prescribed no asthma-related drugs in the previous twelve months, as recorded on practice disease registers.) <http://digital.nhs.uk/catalogue/PUB18887>
- Asthma review in last 12 months AST003: (The percentage of patients with asthma, on the register, who have had an asthma review in the preceding 12 months that includes an assessment of asthma control using the 3 RCP questions) <http://digital.nhs.uk/catalogue/PUB18887>
- Smoking status of 14-19 yr olds AST004: (The percentage of patients with asthma aged 14 or over and who have not attained the age of 20, on the register, in whom there is a record of smoking status in the preceding 12 months) <http://digital.nhs.uk/catalogue/PUB18887>
- Actual number of admissions for asthma (HES) and as a % of estimated children with asthma in CCG
- Estimated annual cost of actual number of asthma admissions, non elective spell tariff : (Cost at 16/17 for PA12Z asthma or wheezing only)

