

East Midlands Respiratory Programme Newsletter

August 2016 Issue 1

Welcome

We would like to warmly welcome you to the first edition of the East Midlands Respiratory Programme newsletter

The East Midlands Respiratory Programme is jointly supported by East Midlands Clinical Networks and East Midlands Academic Health Science Network. The East Midlands Respiratory Programme's objective is to improve the outcomes and quality of life for patients with respiratory disease. Our work programme focusses on a number of key improvement projects aimed at improving the diagnosis and management of patients with respiratory diseases in primary, community and secondary care.

Meet the Team

Dr Charlotte Bolton - Clinical Lead & Consultant and Clinical Associate Professor in Respiratory Medicine, University of Nottingham

Jane Scullion - Clinical Lead & Respiratory Nurse Consultant, University Hospitals of Leicester

Martin Cassidy - Head of Respiratory Network

Peter Hartshorn - Quality Improvement Coordinator



Clinical Leads

Dr Charlotte Bolton and Jane Scullion

Inhaler Technique Videos

The East Midlands Respiratory Programme have produced four videos promoting correct Inhaler Technique.

These videos aim to provide a refreshing and engaging outlook for health care professionals and users of inhalers leading to an increase in awareness of the importance of inhaler devices and a decrease in inability to use.

The videos can be found on the NEW EMRP website:

[Inhaler Technique Videos](#)

- ◆ Two Types of Inhaler - Two Different Techniques – [Watch NOW](#)
- ◆ The MDI - Metered Dose Inhaler - Seven Simple Steps – [Watch NOW](#)
- ◆ The DPI - Dry Powder Inhaler - Seven Simple Steps – [Watch NOW](#)
- ◆ Using Your Inhaler Right Really Matters - MDI DPI Inhaler Techniques – [Watch NOW](#)

All videos can be downloaded [here](#)

A poster was also produced alongside the videos and this can be downloaded [here](#)

East Midlands Clinical Networks– Annual Report

The East Midlands Clinical Networks and Clinical Senate have produced the 2015/16 Annual Report.

This report features the key achievements of the East Midlands Respiratory Programme over 2015/16 and can be accessed on the link below:

[Annual Report](#)

NEW Website

The East Midlands Respiratory Programme are delighted to unveil our NEW website:

www.emrespiratory.co.uk

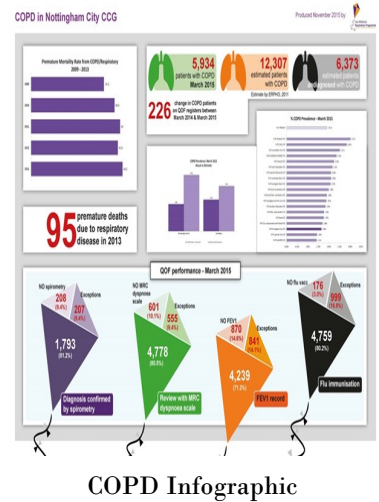
Work undertaken in 2015-16

Highlighting variation in management of respiratory

To highlight variation in COPD across East Midlands in a concise manner for commissioners and providers, we developed bespoke infographics for 19 clinical commissioning groups and 8 acute hospital trusts. They are being used by clinical commissioning groups and providers to inform reviews of the current COPD pathway and help to identify areas of variation, gaps in current pathway and opportunities for improvement.

Feedback has included from Professor Mike Morgan, National Clinical Director for Respiratory Services: “the innovative and eye catching display of information will help, over time, to drive standards upwards”.

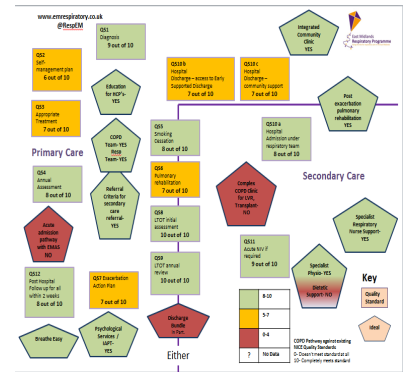
In addition, we have developed an infographic comparing care in acute Trusts across the East Midlands of COPD exacerbations from the National COPD Secondary Care audit and highlight variations in care. This was presented at the RCP COPD Audit Day on 27 July 2016.



COPD Infographic

Service Improvement Initiatives

- We have completed a feasibility study of use of “Oxygen Bands” within 3 acute Trusts in East Midlands, an innovation stemming from Dr Gill Lowrey, Royal Derby Hospital. Overall, this demonstrated improvements in oxygen prescribing and recording. The report has been accepted in “Clinical Medicine” Journal.
- Piloted the GRASP COPD audit tool within 2 CCGs which helps GP practices to identify areas of improvement in the diagnosis and management of COPD
- Produced 4 videos to highlight the importance of inhaler technique for professionals and patients [available here](#)
- In process of undertaking a survey across CCGs to benchmark the COPD pathway which will help inform CCG service reviews



COPD Pathway Survey

Sharing best practice

East Midlands COPD Day ‘A Breath of Fresh Air’ held in November 2015 was attended by 110 clinicians, commissioners and patients. The event had a range of national and local presenters to share best practice in the management of COPD.

In addition, we published a Case Study on COPD exacerbations [available here](#) which highlighted several key areas to consider during an exacerbation and at the time of hospital discharge; as well as a case study and associated campaign on inhaler technique and importance that healthcare professionals are taught.



East Midlands Respiratory Programme COPD Day
Like a breath of fresh air

Thursday 26 November 2015, 9:30am-4:30pm
East Midlands Conference Centre, Nottingham, NG7 2RJ

This partnership event between the East Midlands Respiratory Programme, East Midlands Academic Health Science Network, East Midlands Strategic Clinical Network and British Lung Foundation builds on the success of the regional asthma day held earlier this year and will focus on the importance of COPD care.

Why attend?

- Learn from experienced individuals who are making a difference in COPD both locally and regionally
- Discover what the East Midlands Respiratory Programme can do to support practice and help you make a difference.
- Have the opportunity to learn, discuss, network, hear about and share best practice with like-minded colleagues.

Summary of business plan 2016-17

Priority Areas

- Review of Respiratory Pathways to inform service improvements and improvements in quality and efficiency
- End of Life Care for people with chronic lung disease
- Support the adoption of primary care up-skilling programmes by CCG's
- Standby medication and Antimicrobial resistance
- Produce Asthma infographic and reproduce COPD infographic
- Complete COPD Pathway baseline survey with CCGs
- Evaluate innovations and develop proposals for adoption within East Midlands

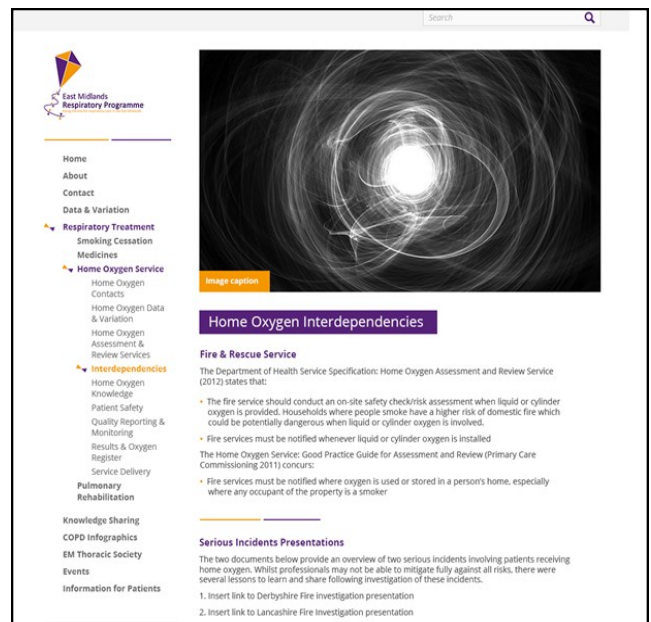
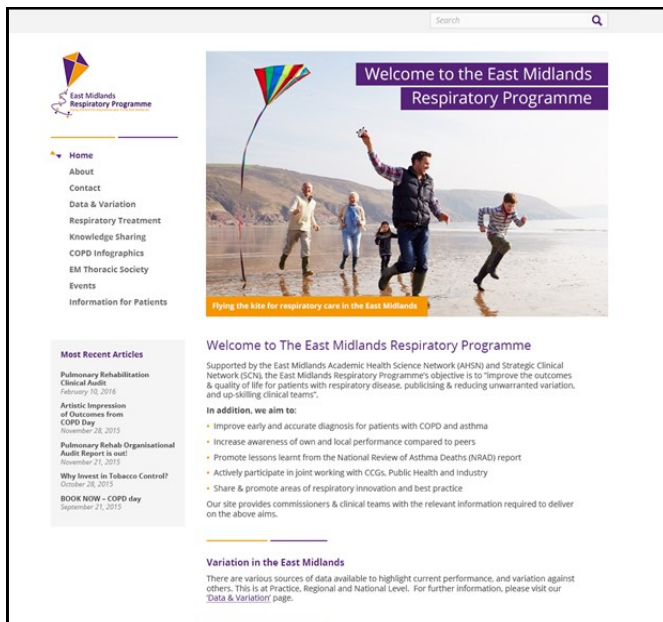
Launch of New Website

The East Midlands Respiratory Programme are delighted to unveil our NEW website:

www.emrespiratory.co.uk

Our site provides commissioners & clinical teams with the relevant information required to deliver on the aims of the network.

We hope you enjoy exploring the new site .



Contact us

contact@emrespiratory.co.uk

www.emrespiratory.co.uk



Tweet us

[@RespEM](https://twitter.com/RespEM)